

# User Computer Requirements and Installation Guide

Qorus Breeze Proposals v2.4

Updated: August 2017





## CONTENT

Introduction .....	3
Client Configuration .....	3
Supported Software .....	4
Internet Explorer Settings .....	6
Microsoft Office .....	12
Install Qorus Breeze Panel Add-In .....	13



## Introduction

This guide specifies the requirements and installation steps necessary to use Qorus Breeze Proposals on the user's computer and covers the following topics:

- Client Configuration

## Client Configuration

This section describes the configuration requirements for each client pc which will be used to connect to Qorus Breeze Proposals.



## Supported Software

Supported 'out of the box'
Supported with setting adjustments, Hotfixes or third party component
Supported with limitations
Not supported

Browser	Office 2007	Office 2010	Office 2013	Office 2016
Internet Explorer 8				
Internet Explorer 9				
Internet Explorer 10	Add Qorus Breeze URL to Internet Explorer's Trusted Sites and Compatibility View Settings	Add Qorus Breeze URL to Internet Explorer's Trusted Sites and Compatibility View Settings	Add Qorus Breeze URL to Internet Explorer's Trusted Sites and Compatibility View Settings	
Internet Explorer 11	Add Qorus Breeze URL to Internet Explorer's Trusted Sites and Compatibility View Settings	Add Qorus Breeze URL to Internet Explorer's Trusted Sites and Compatibility View Settings	Add Qorus Breeze URL to Internet Explorer's Trusted Sites and Compatibility View Settings	Add Qorus Breeze URL to Internet Explorer's Trusted Sites and Compatibility View Settings
Microsoft Edge				

[www.qorusdocs.com](http://www.qorusdocs.com)



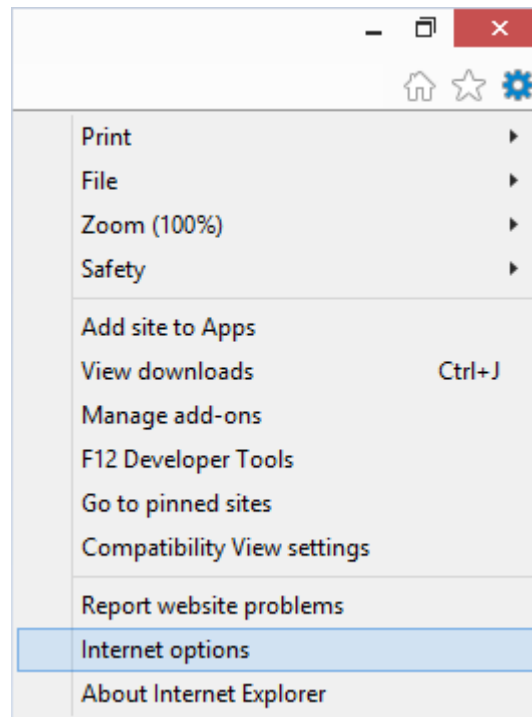
Chrome (Latest)	<p><b>Known Limitations:</b></p> <ul style="list-style-type: none"><li>• Breeze Panel cannot be installed. (As this requires Microsoft Office)<ul style="list-style-type: none"><li>○ Allocation creation and Suggestions unavailable.</li><li>○ Template authoring not possible.</li></ul></li><li>• Emailing of Knowledge Source content, Project Documents and Supporting Documents.</li></ul>
Safari 8 on Mac OS	<p><b>Known Limitations:</b></p> <ul style="list-style-type: none"><li>• Breeze Panel cannot be installed. (As this requires Microsoft Office)<ul style="list-style-type: none"><li>○ Allocation creation and Suggestions unavailable.</li><li>○ Template authoring not possible.</li></ul></li><li>• Emailing of Knowledge Source content, Project Documents and Supporting Documents.<ul style="list-style-type: none"><li>○ Document cannot be automatically attached to an email.</li></ul></li><li>• People picker fields – ‘Check-names’ control non-functioning<ul style="list-style-type: none"><li>○ Applies to adding team members, editing the properties of content and projects.</li></ul></li></ul>

## Internet Explorer Settings

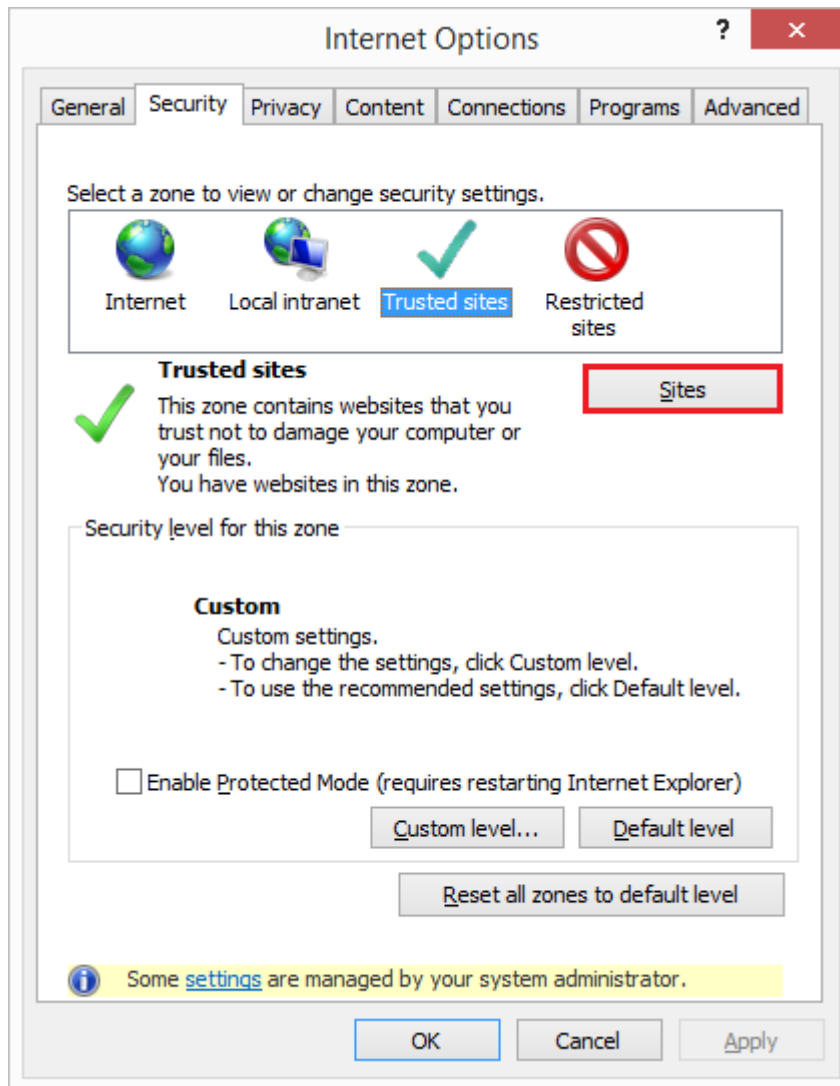
The following Internet Explorer settings must be applied on all client machines in order for Qorus Breeze Proposals to function properly:

### Trusted Sites

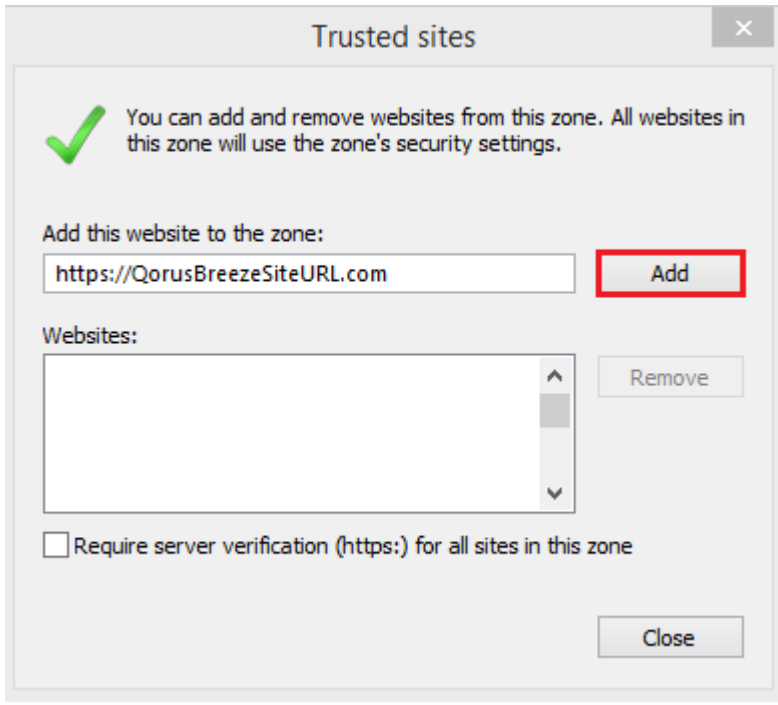
Open Internet Explorer and click on **Tools** (Gear - Top-right) → **Internet Options**



Select the 'Security' tab and click on 'Trusted Sites' and click on the 'Sites' button

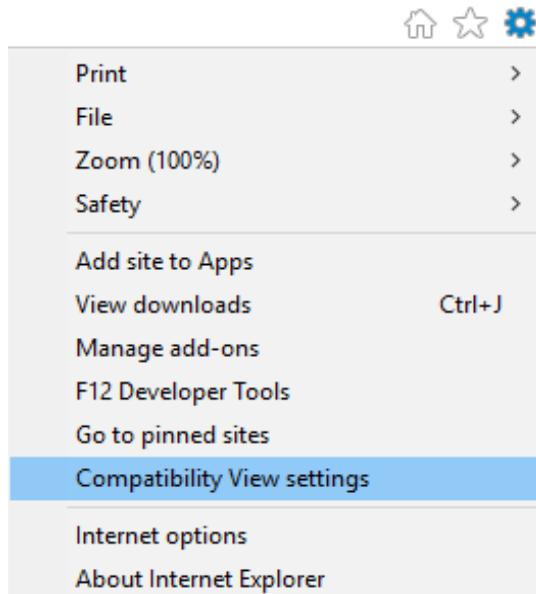


Add the **URL** to your Qorus Breeze site in the textbox and click on 'Add'



### Compatibility View

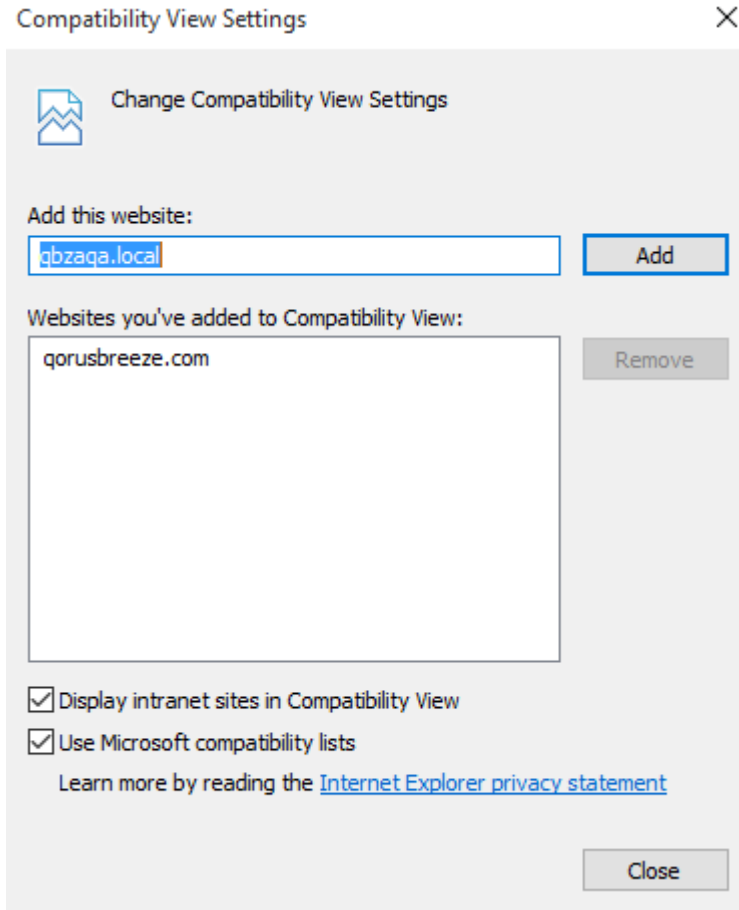
Open Internet Explorer and click on **Tools** → **Compatibility View settings**







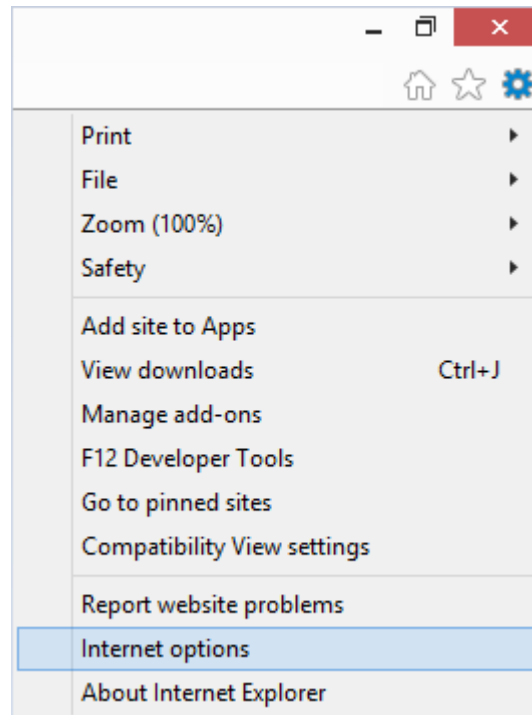
Add the **Qorus Breeze** site domain to the list.





## Allow ActiveX Controls

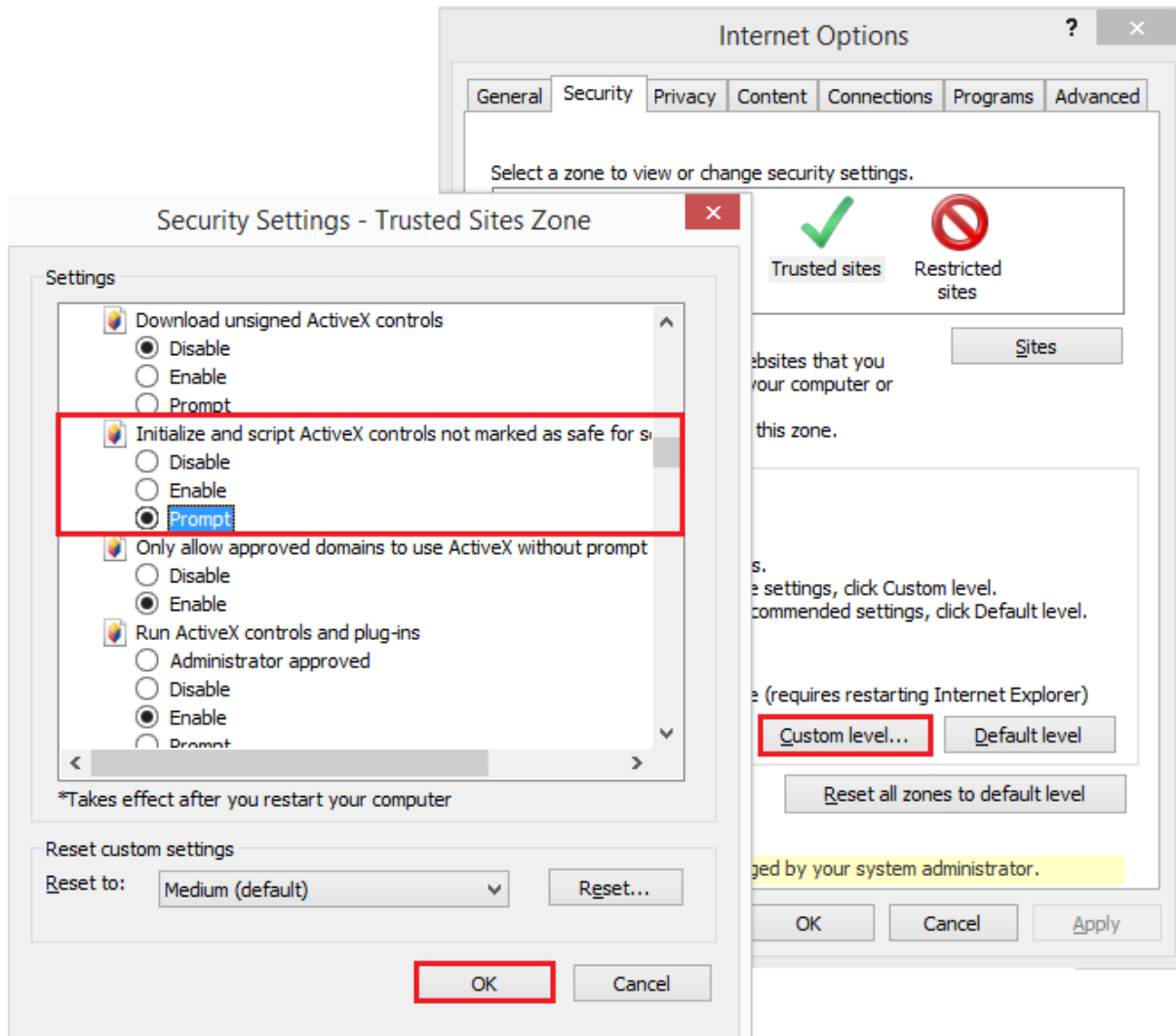
Open Internet Explorer and click on **Tools** → **Internet Options**



Click on **Security > Trusted Sites > Custom Level**

Select **“Prompt”** on **“Initialize and script ActiveX controls not marked as safe for scripting”**.

Click **OK**, and **OK** again.





## Microsoft Office

Qorus Breeze Proposals ships with DocGeneration and SlideGeneration add-ins which require:

- .Net 4.5
- VSTO 4.0 ( <https://www.microsoft.com/en-gb/download/details.aspx?id=48217>)

The following versions of Microsoft Office are officially supported by Qorus Breeze Proposals:

- Professional Plus (2010 till 2016)
- Office 365 Business Premium
- Office 365 ProPlus
- Office 365 Enterprise E3
- Office 365 Enterprise E4
- Office 365 Enterprise E5

These requirements also need to be met by the client machine running Qorus Breeze Proposals. Qorus Breeze Proposals is compatible with Microsoft Office 2007, 2010, 2013 and 2016. The following components are required for using the Qorus Breeze Panel with

### Microsoft Office 2007:

IMPORTANT NOTE these must be installed in the specified order!

- Microsoft Office 2007 (minimum SP2)
- Microsoft Office 2007 PIA:  
<http://www.microsoft.com/downloads/en/details.aspx?FamilyID=59daebaa-bed4-4282-a28c-b864d8bfa513&displaylang=en>

### Microsoft Office 2010:

The following components are required for using Qorus Breeze Panel with Office 2010

- *Microsoft Office 2010 RTM*

### Microsoft Office 2013:

The following components are required for using Qorus Breeze Panel with Office 2013

- *Microsoft Office 2013*

### Microsoft Office 2016:

The following components are required for using Qorus Breeze Panel with Office 2016

- *Microsoft Office 2016*

[www.qorusdocs.com](http://www.qorusdocs.com)

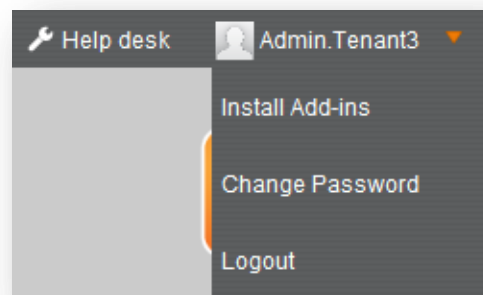


## Install Qorus Breeze Panel Add-In

Before the Qorus Breeze Add-in is installed ensure that all the prerequisites are installed on the client machine.

To install the add-in, close Microsoft Office and ensure that there are no open instances of Microsoft Word or any other Microsoft Office applications.

- From the client machine open the web browser and navigate to Qorus Breeze Proposals
- In the top right of the window you will see the name of the user who is currently logged in. Click on the dropdown next to the name and click on 'Install Add-Ins'



- Depending on the version of Microsoft Office installed on the client machine, select the relevant Breeze Panel to install in your environment.
- Available options are:
  - Word 2007 Addin
  - Word 2010 Addin
  - Word 2013/2016 Addin
  - Excel 2007 Addin
  - Excel 2010 Addin
  - Excel 2013/2016 Addin
  - PowerPoint 2007 Addin
  - PowerPoint 2010 Addin
  - PowerPoint 2013/2016 Addin



## Install Add-ins

Select the Qorus Breeze Panel Addin for the appropriate version of the desired MS Office application

Select the required version

Select the appropriate Addin for DocGeneration or SlideGeneration for the desired MS Office application

Select the required version

After successful configuration you should be able to see the QBP Icon on the 'Home' tab of the relevant Microsoft Office ribbon.

